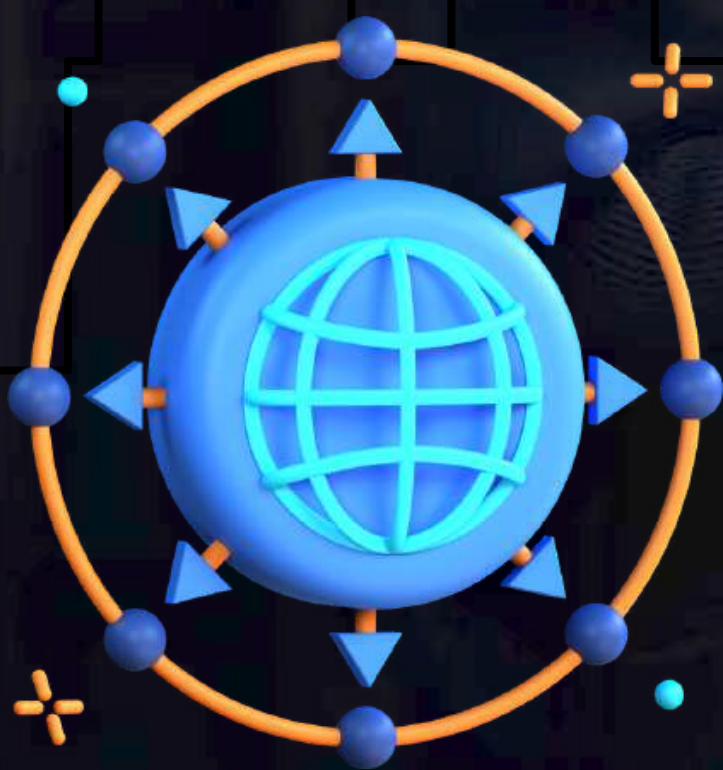




**DWC**

HELLO & WELCOME TO  
**DECENTRALIZED  
WORLD  
COMMUNITY**



More Information  
[www.dwcholding.live](http://www.dwcholding.live)



# Supported Wallets



## BLOCKCHAIN



Polygon is Lowest Transaction fee public Blockchain.

Pairing = DAI  
Fee = POL



# ABOUT DWC TOKEN

TOTAL SUPPLY = 32.5 MILLION  
3Cr 25L



SWAPPING 2% BURNING

10 MILLION (1CR) BURN

IN FUTURE

22.5 MILLION TOTAL SUPPLY

This token cannot be purchased from any external exchange, centralized or decentralized swap.

इस टोकन को किसी भी बाहरी एक्सचेंज, केंद्रीकृत या विकेन्द्रीकृत स्वैप से नहीं खरीदा जा सकता है।

DWC can only be earned. To earn it, one has to become a part of the DWC community. It can be obtained only by joining the DWC community.

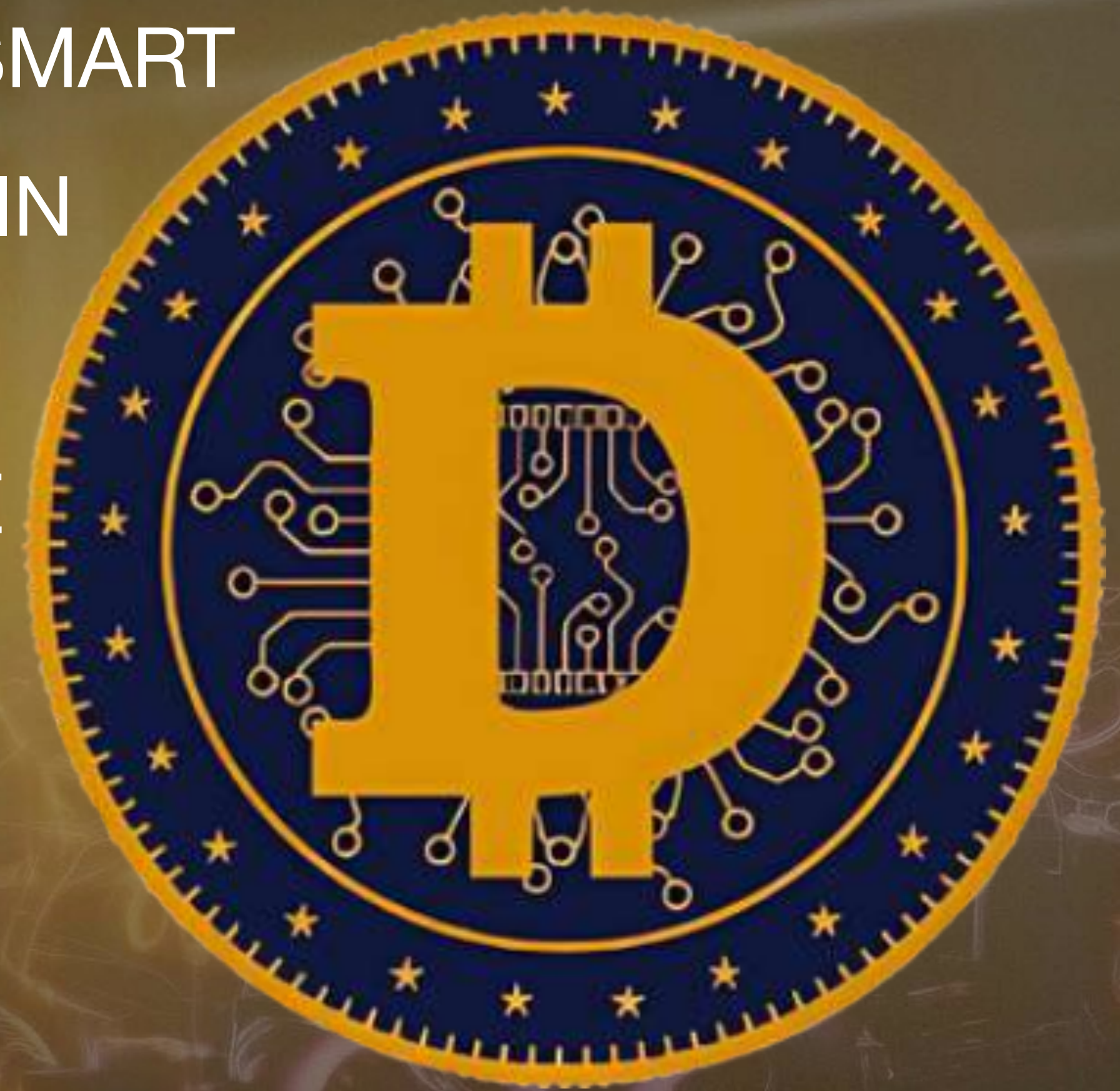
DWC केवल अर्जित किया जा सकता है। इसे अर्जित करने के लिए, आपको DWC समुदाय का हिस्सा बनना होगा। यह केवल DWC समुदाय में शामिल होकर ही प्राप्त किया जा सकता है।

# USP OF DWC



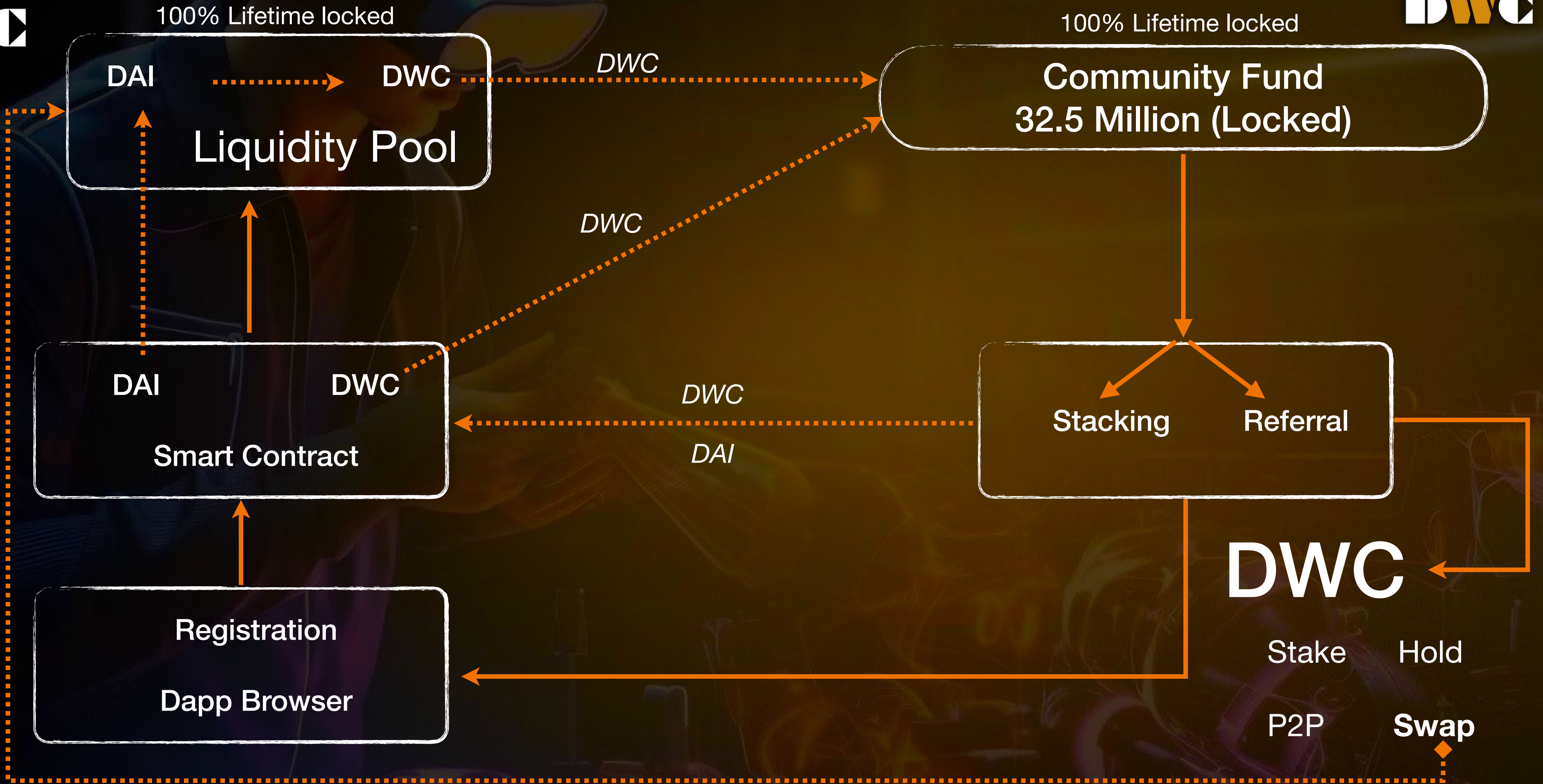
- 👉 LOWER TRANSACTION FEES ENABLED BY SMART CONTRACTS ON THE POLYGON BLOCKCHAIN
- 👉 LIGHTNING FAST
- 👉 LOW ENTRY COST 100% SAFE AND SECURE
- 👉 HUGE PROFITS AND BENEFITS
- 👉 NO OWNERSHIP
- 👉 AUTONOMOUS
- 👉 NO ADMIN

**UNIQUE  
SELLING  
POINT**





# DWC TOKEN ALGORITHM





# SELF STAKE BONUS

Minimum 50 DAI Maximum 10000 DAI

50 DAI - 10000 DAI = Stake Daily Reward  
1% = 400 days 4x Income

For Example = 1000 DAI = 1% = 10 DAI Per day  
= 400 days = 4000 DAI = 4X

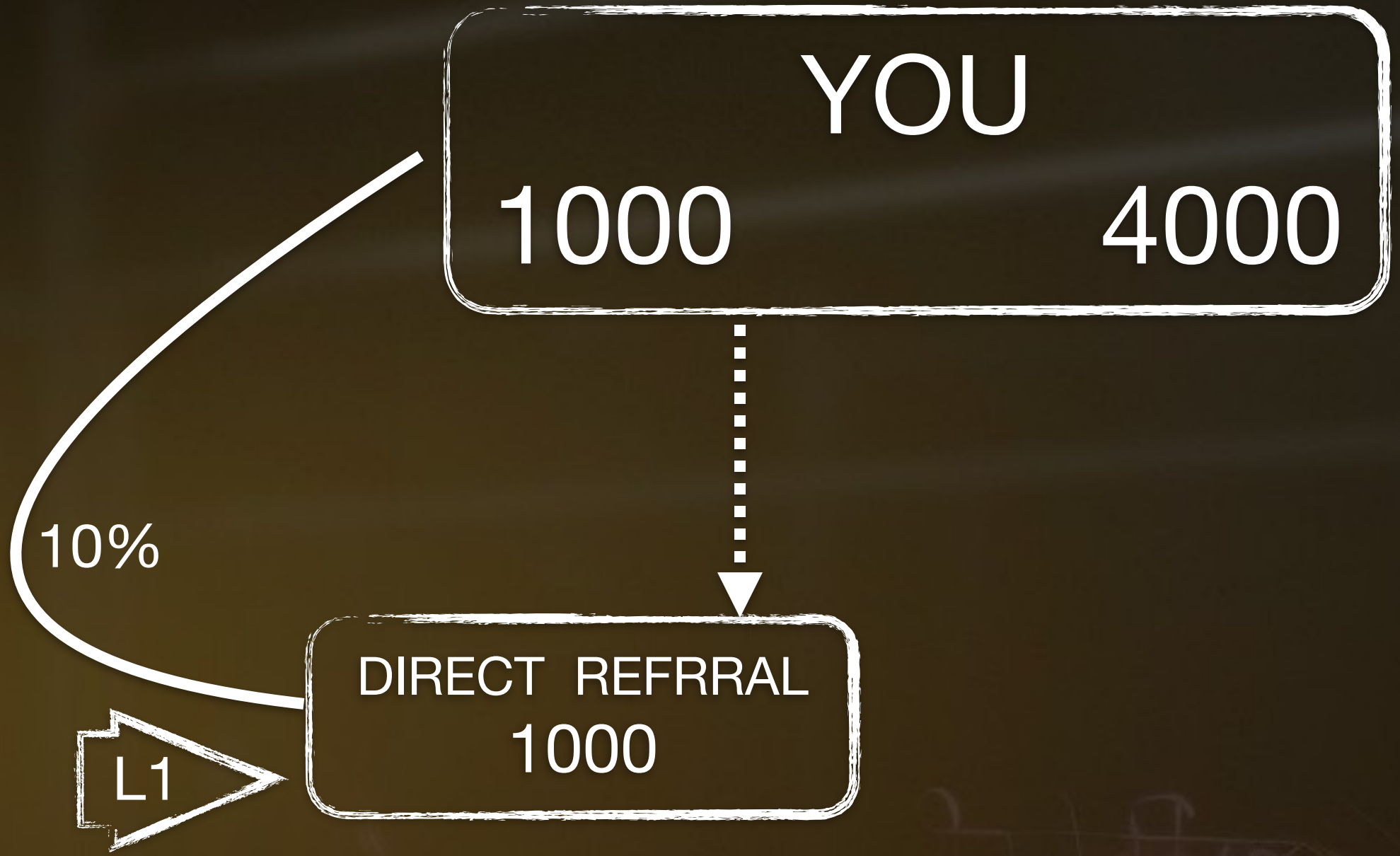
# REFERRAL BONUS

## 21 LEVEL PLAN

- L1 = 10% DIRECT BONUS
- L2= 2% TEAM BONUS
- L3= 1% TEAM BONUS
- L4= 0.5% TEAM BONUS
- L5-L6= 0.25% TEAM BONUS
- L7-L21=0.20% TEAM BONUS

## RESIDUAL BONUS

- L1 =10%
- L2-L11=1%
- L12-L21=0.5%



1000 DAI Direct BUSSINESS = 100 DAI WITHDRAWAL BONUS

10%  
 $4000 \times 10\% = 400 + 100 = 500$

ON DIRECT REFRRAL INSTANT 10% & 400 DAYS 40% = 50% TOTAL BONUS

# WELCOME TO



# DWC RANK & REWARDS

[dwc.holding.live](https://www.dwc.holding.live)



# MANAGER RANK



REWARD 50 DAI 7 DAYS



REWARDS ARE  
WAITING FOR

ACTION-TAKERS!

## QUALIFICATION

- 👉 5 Direct Referrals & Team Holding 1000 DAI
- 👉 2-3 LEVEL OPEN



# STAR MANAGER RANK ☆ <<<<<<

---

**60 DAYS**  
**200 DAI**



## QUALIFICATION

- 👉 2 Direct ACTIVE Manager & Weaker Leg 35 Team Size
- 👉 4-5 LEVEL OPEN



# 2 STAR MANAGER RANK

**90 DAYS**  
**500 DAI**



## QUALIFICATION

- 👉 4 Direct ACTIVE Manager & Weaker Leg 80 Team Size
- 👉 6-8 LEVEL OPEN

# 3 STAR MANAGER RANK



**120 DAYS**  
**2000 DAI**

## QUALIFICATION

- 👉 6 Direct ACTIVE Manager & Weaker Leg 350 Team Size
- 👉 9-10 LEVEL OPEN



# 4 STAR MANAGER

## RANK



## 250 DAYS 6000 DAI



### QUALIFICATION

- 👉 8 Direct ACTIVE Manager & Weaker Leg 1000 Team Size
- 👉 11-15 LEVEL OPEN



# 5 STAR MANAGER RANK



400 DAYS  
20000 DAI



## QUALIFICATION

- 👉 10 Direct ACTIVE Manager & Weaker Leg 5000 Team Size
- 👉 16-21 LEVEL OPEN



# ROYALTY BONUS



- 1) 4-star active manager will receive a 1% Royalty Bonus Based on the total Value of their team's holdings.
- 2) 5-star active manager will receive a 2% Royalty Bonus Based on the total Value of their team's holdings.
- 3) If you are 4-star or 5-star manager and find team members in any leg holding the same rank as yours , you won't receive the royalty bonus from that leg.

# Term & Condition

Minimum withdrawal 10 DAI

Withdrawal charge zero %

DWC Swiping 2% Burning.





# Thank You

For your Attention

